

# Mouse EPHA10 Protein

Cat. No. EPH-MM110



## Description

<b>Source</b>	Recombinant Mouse EPHA10 Protein is expressed from HEK293 with His tag at the C-Terminus. It contains Leu23-Ala565.
<b>Accession</b>	Q8BYG9-1
<b>Molecular Weight</b>	The protein has a predicted MW of 59.6 kDa. Due to glycosylation, the protein migrates to 68-80 kDa based on Bis-Tris PAGE result.
<b>Endotoxin</b>	Less than 1EU per µg by the LAL method.
<b>Purity</b>	> 95% as determined by Bis-Tris PAGE > 95% as determined by HPLC

## Formulation and Storage

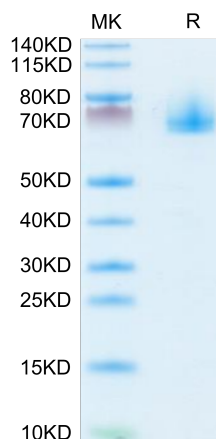
<b>Formulation</b>	Lyophilized from 0.22µm filtered solution in PBS (pH 7.4). Normally 8% trehalose is added as protectant before lyophilization.
<b>Reconstitution</b>	Centrifuge the tube before opening. Reconstituting to a concentration more than 100 µg/ml is recommended. Dissolve the lyophilized protein in distilled water.
<b>Storage</b>	-20 to -80°C for 12 months as supplied from date of receipt. -80°C for 3 months after reconstitution. Recommend to aliquot the protein into smaller quantities for optimal storage. Please minimize freeze-thaw cycles.

## Background

EphA10 (erythropoietin-producing hepatocellular carcinoma receptor A10) is a catalytically defective receptor protein tyrosine kinase in the ephrin receptor family. EphA10 was elevated and higher in tumor tissues than in normal tissues in some cancer types, including pancreatic cancer. EphA10 silencing reduced the proliferation, migration, and adhesion of MIA PaCa-2 and AsPC-1 pancreatic cancer cells. EphA10 plays a pivotal role in the tumorigenesis of pancreatic epithelial cells and is a novel therapeutic target for pancreatic cancer.

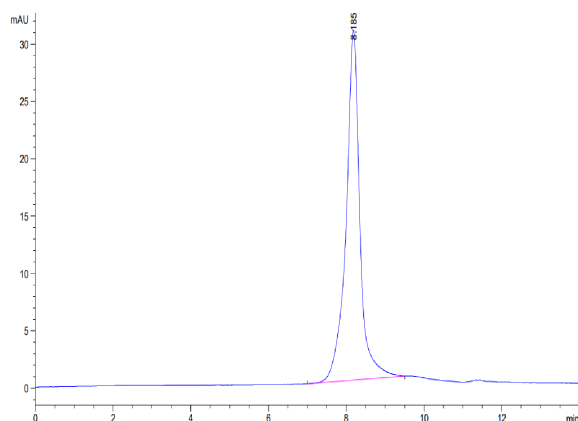
## Assay Data

### Bis-Tris PAGE



Mouse EPHA10 on Bis-Tris PAGE under reduced condition. The purity is greater than 95%.

### SEC-HPLC



The purity of Mouse EPHA10 is greater than 95% as determined by SEC-HPLC.